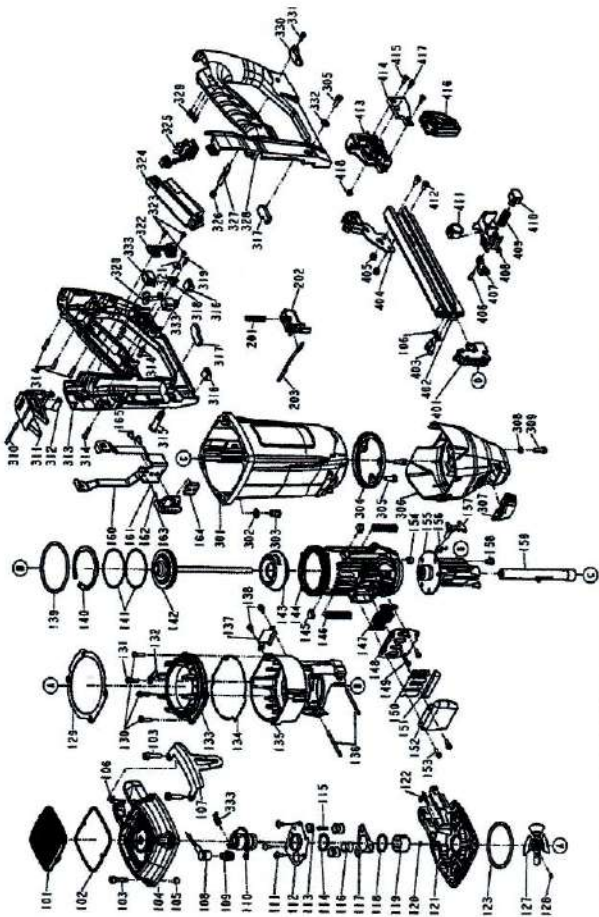


C 40 GZ



| | | | | |
|-----|----------|--------------------------|-----------------------------|--------------------|
| 144 | 12803113 | Cylindre | Cylinder | Zylinder |
| 145 | 12802574 | Amortisseur | Bumper-combustion chamber | Puffer |
| 146 | 12802575 | Ressort | Safety spring | Feder |
| 147 | 12802576 | Filtere | Exhaust mesh plate | Filter |
| 148 | 12802578 | Support clapet | Exhaust baffle | Platte |
| 149 | 12800876 | Vis C HC M4-3 | Hex. Soc. Head bolt | Schraube |
| 150 | 12802580 | Clapet | Reed valve | Ventil |
| 151 | 12802581 | Filtere | Cleaner | Filter |
| 152 | 12802582 | Deflecteur | Deflector | Deflektor |
| 153 | 12800148 | Vis C HC M4-10 | Hex. Soc. Head bolt | Schraube |
| 154 | 12803114 | Entretoise | Self-lapping sleeve | Zwischenstück |
| 155 | 12803115 | Nez | Nose piece | Neze |
| 156 | 12803116 | Ressort | Spring A | Feder |
| 157 | 12803117 | Loquet | Stopper | Riegel |
| 158 | 12801177 | Vis B HC M5-10 | Half round head hex.bolt | Schraube |
| 159 | 12803118 | Palmeur de sécurité | Safety A | Auslöschung A |
| 160 | 12803119 | Sécurité B | Safety B | Auslöschung B |
| 161 | 12802657 | Bille | Steel ball | Kugel |
| 162 | 12803120 | Ressort | Spring | Feder |
| 163 | 12803121 | Couvercle A | Driver guide cover A | Deckel A |
| 164 | 12803122 | Couvercle B | Driver guide cover B | Deckel B |
| 165 | 12803123 | Vis B HC M5-8 | Half round head hex.bolt | Schraube |
| 201 | 12802602 | Ressort | Spring | Feder |
| 202 | 12803124 | Gâchette | Trigger | Auslöser |
| 203 | 12803125 | Sécurité | Safety | Sicherung |
| 301 | 12803126 | Corps | Gun body | Gehäuse |
| 302 | 12802606 | Rondelle | Washer cap | Schraibe |
| 303 | 12802607 | Insert | Cap nut | mutter |
| 304 | 12803127 | Plaque de fixation | Cylinder bracket | Platte |
| 305 | 12803128 | Vis C HC M5-14 | Hex. Soc. Head bolt | Schraube |
| 306 | 12803129 | Couvercle de protection | Safety cover | Schutzabdeckung |
| 307 | 12803130 | Sélecteur | Glove | Selektor |
| 308 | 12803131 | Entretoise | Latch spring bushing | Zwischenstück |
| 309 | 12802630 | Vis C HC M5-16 | Hex. Soc. Head bolt | Schraube |
| 310 | 12802612 | Goupille | Pin-heel actuator | Stift |
| 311 | 12802613 | Lever d'injection | Fuel actuator | Gas Deckel |
| 312 | 12802614 | Rouleau | Bush-heel actuator | Zwischenstück |
| 313 | 12803132 | Poignée A | Handle A unit | Griff A |
| 314 | 12800844 | Vis | Tap bolt | Schraube |
| 315 | 12802616 | Vis | Handle bolt | Stift |
| 316 | 12803133 | Amortisseur | Feed bumper | Puffer |
| 317 | 12802632 | Entrées pour gaz P055210 | Spacer | Zwischenstück |
| 318 | 12803134 | Support | Bracket unit | Kabelführung |
| 319 | 12802620 | Vis | Self tapping bolt | Schraube |
| 320 | 12803135 | Lever | Motor fan switch lever unit | Schalterhebel |
| 321 | 12801696 | Rondelle | Flat washer | Schraibe |
| 322 | 12803136 | Couvercle | Positioning sheet | Deckel |
| 323 | 12802619 | Vis | Self tapping bolt | Schraube |
| 324 | 12803137 | Module électronique | PCB Assy | PCB Modul |
| 325 | 12803138 | Connecteur batterie | Connector unit | AKKU Stecker |
| 326 | 12803139 | Ressort | Spring A | Feder |
| 327 | 12803140 | Axe du loquet | Stopper | Sicherungsstift |
| 328 | 12803141 | Poignée B | Handle B unit | Griff B |
| 329 | 12803100 | Couvercle LED | LED cover | LED Deckel |
| 330 | 12803142 | Lever du loquet | Wrench | Verriegelungshebel |
| 331 | 12802079 | Vis C HC M3-12 | Hex. Soc. Head bolt | Schraube |
| 332 | 12802747 | Rondelle | Flat washer | Schraibe |
| 333 | 12803143 | Faisceau électrique | Motor cable | Motor Kabel |
| 334 | 12803063 | Gaine isolante | Insulating sleeve | Isolierhülse |
| 401 | 12803144 | Guide | Driver guide | Koblenührung |
| 402 | 12803145 | Magasin A | Magazine A | Magazin A |
| 403 | 12801736 | Vis C HC M5-10 | Hex. Soc. Head bolt | Schraube |
| 404 | 12803146 | Support magasin | Bracket unit | Magazinhänger |
| 405 | 12802785 | Ecrou nikitop M5 | Lock nut | Müller |
| 406 | 12801791 | Vis | Tap bolt | Schraube |
| 407 | 12803147 | Poussoir | Plunger | Robott |
| 408 | 12803148 | Marnette du poussoir | Projecting hood cover | Robottgriff |
| 409 | 12803149 | Ressort | Spring | Feder |
| 410 | 12803150 | Bouton du poussoir | Pusher button | Druckknopf |
| 411 | 12802972 | ressort | Spring | Feder |
| 412 | 12803151 | Vis B HC M5-10 | Half round head hex.bolt | Schraube |
| 413 | 12803152 | Couvercle | Projecting hood cover | Deckel |
| 414 | 12803153 | Vis | Door tap bolt | Deckel |
| 415 | 12803154 | Couvercle | Guide nub unit | Schraube |
| 416 | 12803155 | Pied | Half round head hex.bolt | Magazinhülse |
| 417 | 12800168 | Vis B HC M4-10 | Lock nut | Schraube |
| 418 | 12800048 | Ecrou nikitop M4 | Lock nut | Müller |

| | | | | |
|-----|----------|------------------------|----------------------------|-------------------------|
| 101 | 12803062 | Deflecteur | Deflector | Deflektor |
| 102 | 12802590 | Filtere | Filter unit | Filter |
| 103 | 12802789 | Vis C HC M5-25 | Bolt with washer | Schraube |
| 104 | 12802541 | Couvercle | Cap | Deckel |
| 105 | 12802540 | Entretoise | Coiler | Zwischenstück |
| 106 | 12800834 | Rondelle | Flat washer | Schraibe |
| 107 | 12803106 | Crochet | Spring retainer | Haken |
| 108 | 12803107 | Cable haute tension | High voltage cable set | Hochspannungskabel |
| 109 | 12802544 | Boucle d'allumage | Sparkler | Zündkerze |
| 110 | 12802545 | Moteur | Motor unit | Motor |
| 111 | 12802647 | Vis B HC M4-10 | Half round head hex.bolt | Schraube |
| 112 | 12802546 | Plaque de centrage | Positioning sheet | Positionierblatt |
| 113 | 12802549 | Support câble de masse | Ground wire bracket | Erdeungskabelhalterung |
| 114 | 12802546 | Crochets | C-ring | C-Ring |
| 115 | 12802593 | Silencibloc | Positioning shaft | SHR |
| 116 | 12802592 | Entretoise | Feed bumper | Puffer |
| 117 | 12802601 | Entretoise | Spacer | Zwischenstück |
| 118 | 12802594 | Crochets | C-ring | C-Ring |
| 119 | 12802590 | Manchon moteur | Sleeve motor | Muffe |
| 120 | 12802551 | Rondelle de guidage | Washer-motor shaft | Scheibe |
| 121 | 12803108 | Injecteur | End cap-combustion chamber | Zylinderkopf |
| 122 | 12802652 | Stem | Fuel stem retainer | Kraftstoffvorhaltestift |
| 123 | 12803109 | Joint | O-ring | O-Ring |
| 124 | 12802589 | Ventilateur | Cooling fan Assy | Fan |
| 125 | 12802558 | Vis d'écrou | Hex. Soc. Head screw | Schraube |
| 126 | 12802558 | Joint | Spacer | Dichtung |
| 127 | 12802558 | Vis C HC M4-16 | Hex. Soc. Head bolt | Schraube |
| 128 | 12802558 | Vis C HC M4-16 | Hex. Soc. Head bolt | Schraube |
| 129 | 12802558 | Guide | Guide | Führung |
| 130 | 12802552 | Chambre de comb. Sup. | Upper combustion chamber | Obere Brennkammer |
| 131 | 12800600 | Joint | Packing | Dichtung |
| 132 | 12802698 | Chambre de combustion | Combustion chamber | Brennkammer |
| 133 | 12802657 | Goupille | Pin | Stift |
| 134 | 12802654 | Protection | Weather | Schutz |
| 135 | 12801822 | Vis C HC M4-5 | Hex. Soc. Head bolt | Schraube |
| 136 | 12802698 | Joint | C-ring | C-Ring |
| 137 | 12802698 | Segment | C-ring | C-Ring |
| 138 | 12802698 | Piston | Piston ring | Kolbenring |
| 139 | 12803111 | Amortisseur | Driver unit | Kolben |
| 140 | 12803112 | Amortisseur | Bumper | Puffer |